

CAMILLE ROCHE (1894-1948)

Terrestrial Paradise



Camille ROCHE – Couple d'autruches et biches Projet de Paravent (Pair of Ostriches and Does, Design for a Folding Screen)
Circa 1930 – Mixed media on paper, atelier's seal, 40 x 45.5 cm

16 SEPTEMBER – 15 OCTOBER 2017

vernissage Friday 15 September from 5pm

Table of Contents

p.3-7

CAMILLE ROCHE AT GALERIE DUMONTEIL

- Terrestrial Paradise
- The Animal at the Core of the Work
- Nature as a Source of Inspiration
- Never-before-seen work by Camille ROCHE to be presented at the Biennale des Antiquaires

p.8

CAMILLE ROCHE (1894-1948)

p.9

NEVER-BEFORE-SEEN WORK

p.10-11

IMAGES AVAILABLE FOR THE PRESS

p.12

GALERIE DUMONTEIL

CAMILLE ROCHE (1894-1948)

Terrestrial Paradise



Camille ROCHE (1884-1984) *Les Gazelles (The Gazelles)*
Mixed media on gold leaf – 73 x 60.5 cm

From 16 September to 15 October 2017, Galerie DUMONTEIL presents, as a part of its “Modern” exhibitions program, a never-before-seen selection of work by the 1930s painter and illustrator, Camille ROCHE.

Terrestrial Paradise

“Terrestrial Paradise”: this exhibition will put in perspective Camille ROCHE’S works, drawings, folding screens, studies and projects, representing the immense diversity of his work with Art Déco accents, always centered around the two themes at the core of the DUMONTEIL Gallery: Nature and Animal.

Along with this, an ensemble of sculptures realized by Camille ROCHE’S contemporaries will be presented, principally from the celebrated artistic group, the Groupe des Douze, which includes François POMPON, George-Lucien GUYOT and Charles ARTUS.



Camille ROCHE (1884-1984) *Arbre en fleurs (Tree in Flower)*
Oil on canvas – 60 x 71 cm

The Animal at the Core of the Work

The animal returns as a recurring theme in Camille ROCHE'S work. Sometimes domestic, sometimes wild, from garden animals to forest animals, the artist's work is filled with does, swans, exotic birds and panthers. It was in the Jardin des Plantes in Paris where the artist drew his inspiration.

Camille ROCHE did not try to represent the animal in an anatomical way, but he looked to, above all, capture the movement, the animal's gaze, without ever leaving out the details. His drawings, with their strong Art Déco accents, do not fail to reveal the artist's own style, which earned him the critics' praise on many occasions.

The abundance of natural elements, in perfect harmony with the animals, create a veritable garden of Eden. This artist's willingness to express happiness and beauty, places his work in a wider scope and vision, one that looks to escape reality and to forget the scars left behind by the First World War.



Camille ROCHE (1884-1984) *Paravent aux cygnes (Screen with Swans)*
Mixed media and work on gold leaf, signed – 154 x 56 cm

Nature as a Source of Inspiration

In addition to the Animal, Nature in all its entirety is invoked in each one of Camille ROCHE'S pieces. Inspired by the fascinating scenery and gardens which he encountered during his travels in Tunisia and Italy, Camille ROCHE creates havens of peace, where nature's elements all come together in perfect unison.

The banks of the Loire, the forest's undergrowth which surrounds it, the wild sand beaches on the banks of the river, and the carefully kept garden by his spouse, become recurring motifs in his work.



Camille ROCHE (1884-1984) *La Creuse*
Oil on canvas, signed – 83 x 62,5 cm

His exceptional mastery of artistic techniques allowed him to translate and transpose the long hours he spent observing nature. His incredible diversity and his adaptability and versatility, manifested itself in the choice of materials, always original (porcelain or wood panels), the precious materials such as gold and silver leaf, lacquer panels, linoleum, stucco and techniques like fresco, tempera, oil, watercolor and pastels...

Even though his work is infused with influences from the Far East, Camille ROCHE, the peintre-décorateur (the title that would follow his name in the official catalogues) created his own original artistic handwriting.

Never-before-seen work by Camille Roche presented at the Biennale des Antiquaires

Galerie DUMONTEIL will exhibit an exceptional and uniquely decorated stand at the Biennale des Antiquaires 2017 entitled "Les Jardins de la Mortola", running concurrently with Camille ROCHE's "Terrestrial Paradise" exhibition.

Created for Lord and Lady CHOLMONDELEY's villa in Juan-les-Pins in 1937, Les "Les Jardins de la Mortola" will be exhibited for the first time in France.

Camille ROCHE's marvelous design representing a splendid garden can be considered the artist's masterpiece.



Camille ROCHE - *The Mortola Gardens*

Nine panels commissioned by Marquis and Marquess Cholmondeley for the Salle Fraîche in their villa, "Le Roc," in Juan-les-Pins in 1939.
Oil on wood panels panels – 268 x 1071 cm

Background

In 1937, Lord CHOLMONDELEY, chamberlain to King George VI of England, and his wife, Lady Sybil CHOLMONDELEY, born SASSON, put a call out to the great artists of the Art Déco movement, such as Eileen GRAY, Jean-Jacques RUHLMANN and Jean DUNAND for the design of the villa, "Le Roc," that they came to acquire in Juan-les-Pins in the South of France. They commissioned Camille ROCHE to create several pieces for the villa.

Camille ROCHE painted a luxurious Mediterranean landscape on nine wood panels in the villa's Salle Fraîche, composed of palm trees, cacti, and stone pine trees, their branches spread out on the covered ceiling giving the room an impression of height thanks to an ingenious shortening of the trunks. The trails, unfolding and winding in the vegetation, seem to be inspired by La Mortola, one of the most famous gardens on the Côte d'Azur. The grand design was the culmination and the pinnacle of the peintre-décorateur's career.

CAMILLE ROCHE (1884-1984)

Poet and Virtuoso



Camille ROCHE was born in Paris in 1894. His father was the artist and art trader, Odilon ROCHE. Since childhood, he demonstrated a great talent for painting and drawing. In 1905, at only eleven-years-old, he exhibited two works at the Salon d'Automne. In 1912, he went to Mortola, and then to Tunisia with Léon DETROY from where he would bring back numerous drawings. From 1913, he started receiving his first design commissions, notably for the apartment of Colette, and then Coco CHANEL's in 1917.

Drafted to the French Army in 1914, he was fatally wounded in combat and brought back home in 1916. After the war, he started his collaboration with the Manufacture de Sèvres which would last for many years, notably during two international exhibitions in 1925 and 1937, for which he realized *Terrestrial Paradise* and the *Boudoir* of Serge and Camille ROCHE. In 1920, he became laureate of the first promotion of the "Fondation américaine pour la pensée et l'art français" ("American Foundation for Thought and French Art"), equally known under the name, "Florence Blumenthal Foundation."

Then, in the 1930s, he collaborated with his brother Serge ROCHE, one of the greatest designers of the time, with whom he put together the essen-

tial design of the private mansion on rue Las Cases and participated in the designs for many of Serge ROCHE's commissions. He created for this, among others, the wonderful screens in gold and silver leaf. In 1937, he executed a grand décor for the villa of Lord and Lady CHOLMONDELEY, chamberlain for King George VI of England in Juan-les-Pins.

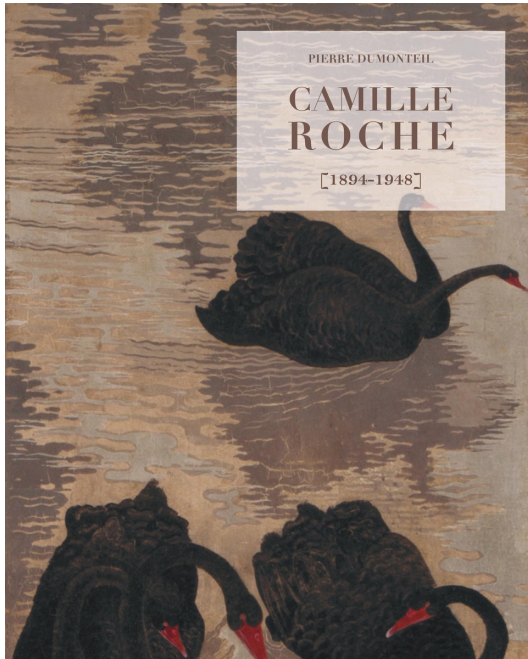
He is as equally well-known for his nude drawings, landscapes and, also, animals. He had many solo exhibitions dedicated to his work, at the Galerie DEVAMBEZ in 1924 and at the Galerie VINCENT in 1930. Throughout his career, Camille ROCHE regularly took part in the Salon d'Automne, Salon des Artistes Décorateurs, Salon de la Société Nationale des Beaux-Arts and in the Salon de la Société des Artistes Animaliers.

His exceptional mastery of all traditional painting techniques, no matter the medium, allowed him complete freedom in artistic creation. His powerful and personal "writing" made him one of the most remarkable figures of his time.

If his life was marked by a long succession of personal and familial tragedies, his work seems to belong to "Paradise," as it expresses beauty and happiness.

CAMILLE ROCHE

Never-before-seen work



For the occasion, and in announcing the presentation of this exceptional and historic piece at the gallery during the Biennale des Antiquaires in September 2017, a monograph will be published and presented for the first time to the public.

It will retrace Camille ROCHE'S artistic evolution, from his personal projects for Coco Chanel to his collaborations with his brother, the designer Serge ROCHE, through their trips in Italy and in Tunisia, which had a profound effect on the artist's work, always imprinted by poetry, dreamlike and sensitive, like a hymn to Nature and its intimate rapport with life.

Price : 85€

ADDITIONAL VISUALS AVAILABLE FOR THE PRESS



Camille ROCHE - *Grand paravent aux poules dindons et coqs*
(Large Screen with Turkeys and Roosters)

Screen with four panels, mixed media on tow paper, signed in the top right-hand corner
180 x 228 cm



Camille ROCHE - *Animaux dans la forêt* (Animals in the Forest)

Mixed media on gold leaf, signed
30.5 x 39 cm



Camille ROCHE - *Branche de cerisier* (Cherry Tree Branch)

Mixed media, signed
49 x 59.5 cm

ADDITIONAL VISUALS AVAILABLE FOR THE PRESS



Camille ROCHE - *Meules (Grindstones)*

Oil on paper, signed
48 x 75 cm



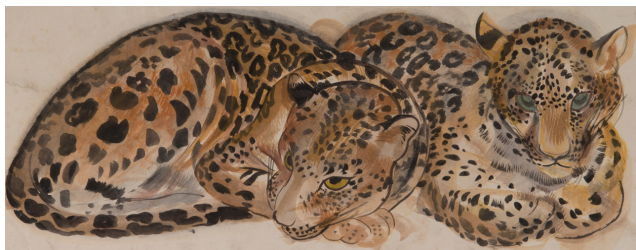
Camille ROCHE - *Biches dans la forêt (Does in the Forest)*

Mixed media on silver leaf, signed
87 x 167.5 cm



Camille ROCHE - *Sous-bois (Forest Floor)*

Oil and gouache on paper
51 x 69 cm
Private collection



Camille ROCHE - *Couple de panthères (Pair of panthers)*

Gouache
16 x 39 cm

For the visuals :

Copyright : Camille Mc OUAT / Galerie DUMONTEIL

GALERIE DUMONTEIL



Paris
38 rue de l'Université – 75007 Paris



Shanghai
Huangpu Qu, Fuxing Middle Road



New York
475 Park Avenue

The DUMONTEIL Gallery is a modern and contemporary art gallery founded in 1982 by Dothi and Pierre DUMONTEIL. For more than 30 years, the gallery has been situated at 38 rue de l'Université in the heart of the Left Bank's historic area. They are honoured to have exhibited great sculptors, painters and eminent photographers of the 20th and 21st century, works that regularly and punctually explore the theme of the Animal.

The gallery is renowned for its collective exhibitions and monographs dedicated to artists from 1930 up until the 1970s, from François POMPON to Georges-Lucien GUYOT, as well as Diego GIACOMETTI, Pablo PICASSO, Thierry VAN RYSWYCK, Armand PETERSEN, Joseph CZAKY, Marcel DERNY and Charles ARTUS, among others.

For more than 20 years, the gallery has dedicated itself to the discovery of and promotion of the best contemporary artists, treating the subject of the Animal figure, along with the theme of Nature. Today, Daniel DAVIAU, Jean-Marie FIORI, Helmut KOLLER, Eric PILLOT, Jean-Claude MEYNARD, Rubén FUENTES, Hubert LE GALL and Wang KEPING all share, with their formative counterparts, the walls of the gallery's three international exhibition spaces, in Paris, Shanghai and New York.

Through this, the DUMONTEIL Gallery has become the referential gallery in the promotion of Animal figure representation in art, in France and around the world. Regularly collaborating with museums, numerous publications and participating in several international fairs, including the Biennale des Antiquaires since 1992 and the PAD Paris/London since 1998. The gallery is a member of the Carré Rive Gauche, of CNE and of SNA.

COMING UP FOR GALERIE DUMONTEIL

PARIS ■ Biennale des Antiquaires – 12 to 18 September 2017

HONG KONG ■ Fine Art Asia – 30 September to 3 October 2017

LONDRES ■ PAD – LONDON – PAD - 2 to 8 October

Galerie DUMONTEIL

38 rue de l'Université – 75007 Paris
+33 1 42 61 23 38
www.dumonteil.com

Press Contact

Lindsey Williams
+ 33 (0)1 43 20 12 13
lwilliams@communicart.fr